



PROJECT DESCRIPTION

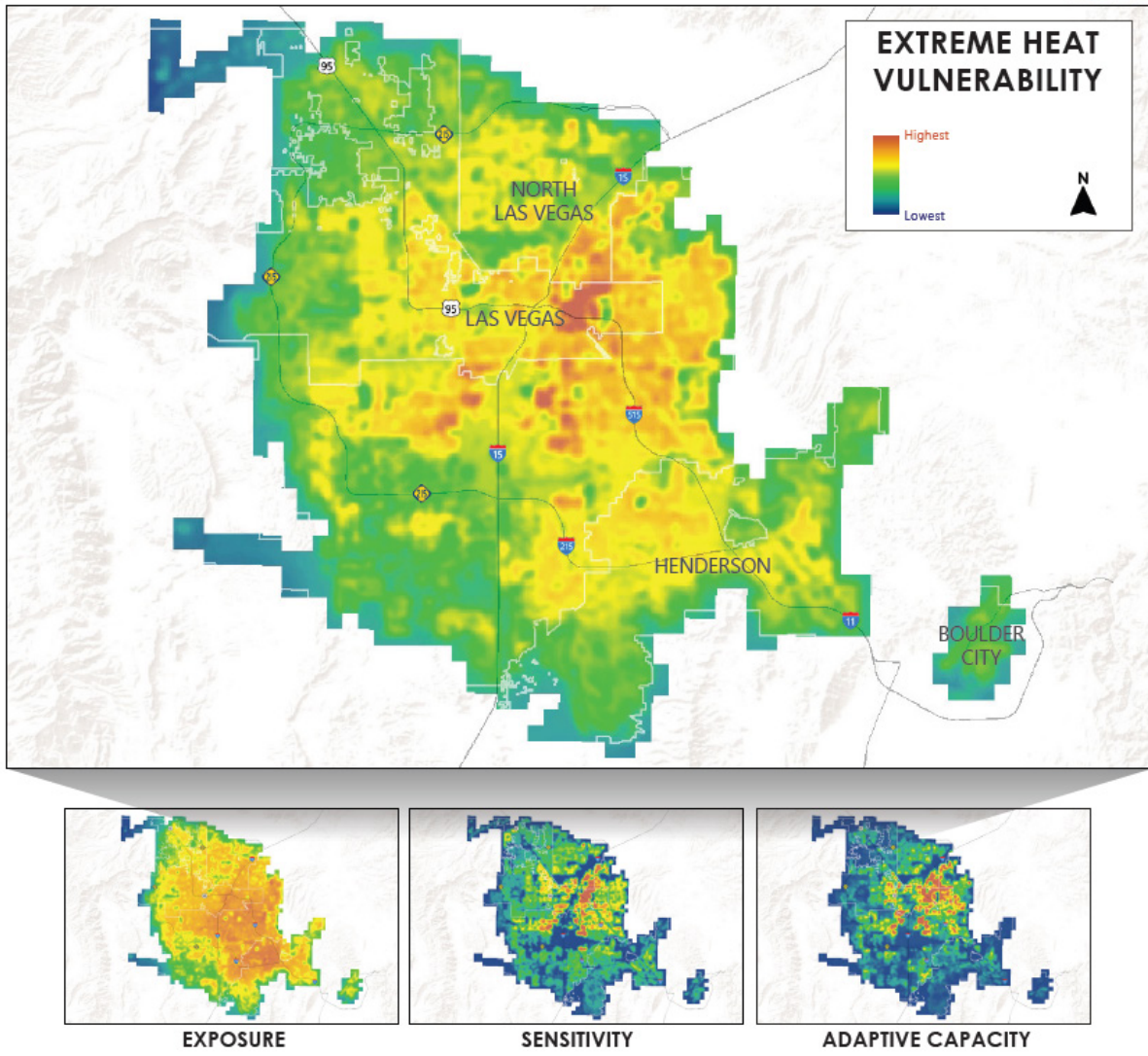
Southern Nevada and the Las Vegas Metro Area are critical to the state's economy but are among the most vulnerable to extreme heat. Of the multiple climate stressors, extreme heat is one of the most pressing issues for the region. Las Vegas already experiences frequent extreme heat, exacerbated by the urban heat island (UHI) effect which causes cities and developed areas to be warmer than surrounding areas. As in other regions, extreme heat events in Southern Nevada impact populations differently based on their socio-economic status, ethnicity, vocation, and other characteristics. People's vulnerability, behavioral responses to information about heat events and adaptive responses differ across populations, all of which affect the impact on individuals and the larger community.

The SNHRL is a regionally focused social learning space developed around a community of practice on extreme heat management and health that brings together public service providers (social services, urban planners, emergency responders, etc.) who understand the needs of their communities and are active in implementation decisions with researchers, and experts who can bring new data, modeling, and design options in an iterative process of mutual learning. It builds on the "urban lab" approach, which brings together urban planners and community organizations with researchers who assist in designing potential solutions. Social learning labs develop integrative solutions that account for the complexity of the social, built, biophysical, and technological systems, build new relationships between those active in implementation and research scientists,



MISSION

Co-creating heat adapted communities for a resilient economic future.



These maps show where in the Las Vegas metro area people are most vulnerable to extreme heat. Red colored areas represent where people are most vulnerable, exposed and least able to adapt to extremely hot temperatures.

create new learning opportunities, and can spur new areas of scientific and applied research. The SNHRL will focus on extreme heat events, accounting for the complexities of exposure levels to extreme heat, economic sector, information needs for decision makers, and concerns such as growth and increasing water scarcity. This approach will increase the capacity for Southern Nevada to address extreme heat and implement effective adaptation to support economic growth and livable communities..

The goal for this project is to develop effective strategies for reducing the temperatures that people experience

in their daily lives that are suitable for different socio/ built environments and diverse populations. The SNHRL centers the co-production of heat adaptation and resilience strategies with the people and communities that are most impacted by heat. Centering these communities can better leverage local knowledge to develop and promote implementable heat adaptation approaches.

CONTACT INFORMATION:

Ms. Ariel Choinard, arielchoinard@dri.edu

Dr. Tamara Wall, tamara.wall@dri.edu